



SCAN TO DONATE!



SICKLE CELL FOUNDATION NIGERIA RC: 258517

... Bringing Hope to the African Child

National Sickle Cell Centre, Ishaga Road
(Opposite LUTH) Idi-Araba, Surulere, Lagos

Instagram:
sicklecellfoundationng

Facebook:
Sickle Cell Foundation Nigeria

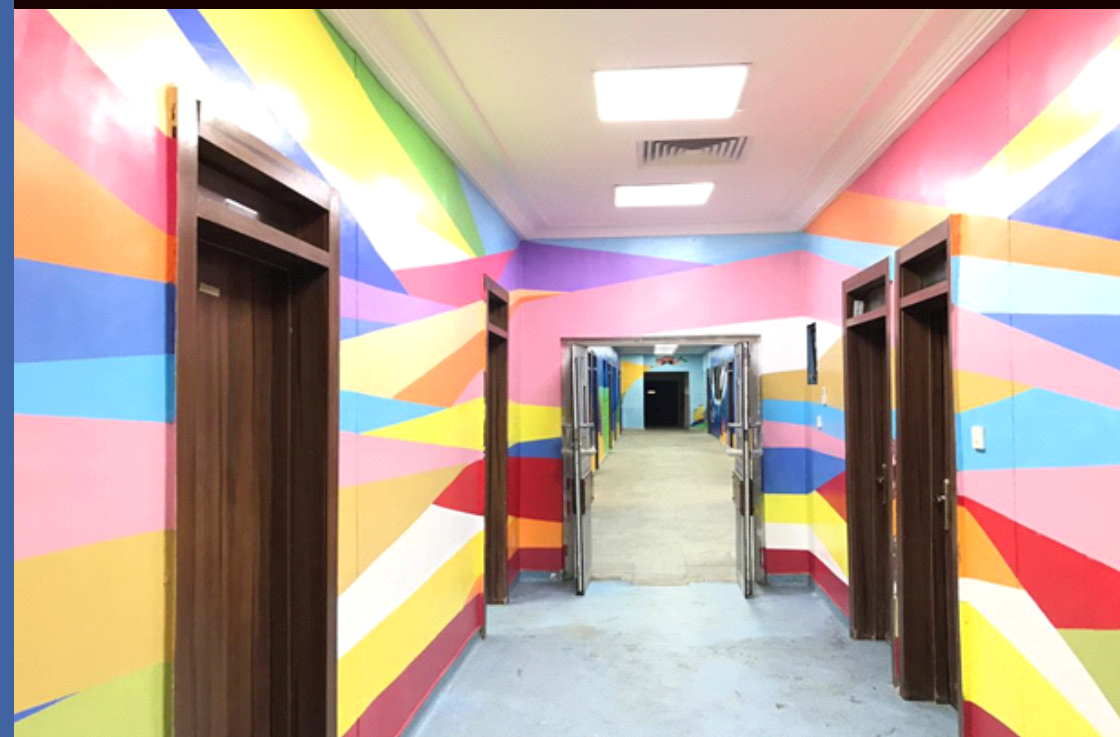
Twitter:
sicklecellnig

Website:
www.sicklecellfoundation.com

POST-TRANSPLANT CLINIC

SICKLE CELL FOUNDATION NIGERIA

LAGOS UNIVERSITY TEACHING HOSPITAL



SICKLE CELL FOUNDATION NIGERIA RC: 258517

... Bringing Hope to the African Child

INTRODUCTION

Allogeneic Stem Cell Transplant (SCT), sometimes referred to as Bone Marrow Transplant (BMT), is the transfer of blood-forming cells from a healthy person (Donor), to replace the bone marrow of an individual with various diseases (Recipient). Eventually, the bone marrow of the recipient begins to produce normal blood cells like the donor.

Over the past several years, many Nigerians seeking cure for various blood disorders have often travelled abroad (mostly to India, United Kingdom, and United States) for SCT/BMT. Standard care for recipients of SCT/BMT is close follow-up in a comprehensive Post-Transplant Clinic to improve long-term survival. Individuals who have accessed the treatment abroad often have to return to Nigeria where the required comprehensive follow-up care is lacking.

Post-Transplant Clinics are vital because of potential complications that can occur after the procedure which can easily be identified and treated. These complications include - infections, Graft versus Host disease (new donor cells can attack recipients' body), chronic lung, heart and kidney problems, fertility complications, mental health, musculoskeletal, dental, endocrine, bone, and other metabolic complications, and secondary cancers.

The Post-Transplant Clinic is also important for drug monitoring, maintaining the stem cell or bone marrow graft (new donor cells), screening for disease recurrence and providing required routine health maintenance care.



THE SCFN-LUTH POST STEM CELL TRANSPLANT CLINIC

To address this gap in care for the increasing population of Nigerians who have undergone the transplant procedure abroad, the Sickle Cell Foundation Nigeria (SCFN), in collaboration with the Lagos University Teaching Hospital (LUTH), opened a dedicated, multidisciplinary, Post - Transplant Clinic at the newly established SCFN-LUTH Bone Marrow Transplant Centre, LUTH Lagos - on the 3rd Floor of the Olikoye Ransome-Kuti Children Emergency Centre, LUTH. The clinic is open to all patients who have had stem cell/bone marrow transplant for various forms of blood disorders.

What a Patient Should Expect at the SCFN-LUTH post -transplant Clinic



At each visit to the clinic, a complete health assessment will be carried out. This will include a full history and physical examination, blood tests and sometimes, radiologic examinations. The patient's drugs will be reviewed, and adjustments made where necessary.

The patient may also be referred to see doctors from various specialties as indicated and follow-up appointments may be scheduled, either face-to-face or virtually.

The clinic is strictly by appointment and interested persons are advised to schedule appointments in time. (See email and phone number below.)



NOTE:

The Post BMT Clinic is open to all patients who have had Stem Cell transplant - irrespective of indication or reason for the transplant.



For appointments and more information:

Call: 08100002001, 08100002003

Email: info@sicklecellfoundation.com

Visit: Sickle Cell Foundation Nigeria, National Sickle Cell Centre, Ishaga Rd (Opposite LUTH), Idi-Araba, Surulere, Lagos.

